

Exclusive Charter



AMERICAN TOURS  presents

Normandy, Paris & the Seine River Cruise

featuring 7 nights aboard the Amadeus Diamond

9 Days October 21, 2025



BOOKING DISCOUNT!
Save \$200 per person
\$400 per couple*
*See Reservation Info for Booking Discount details



Etretat

9 Days October 21, 2025

Normandy, Paris & the Seine River Cruise

Day 1 - DEPART US - OVERNIGHT FLIGHT

Day 2 - ARRIVE PARIS

Meet your PWD Tour Director - Transfer to your ship

Board the **MS Amadeus Diamond** for your **7 Night Seine River Cruise**

Welcome Drink & Welcome Dinner onboard - Ship departs Paris

⊗ (D) *Overnight - Amadeus Diamond*

Day 3 - CONFLANS

Morning - Cruising - Arrive in Conflans

Afternoon - **Auvers-sur-Oise Excursion** (Village of Van Gogh)

⊗ (B,L,S & D) *Overnight - Amadeus Diamond*

Day 4 - ROUEN

Morning - **Rouen Walking Tour** (Museum Town)

Afternoon - Explore Rouen on your own - Ship departs late afternoon

⊗ (B,L,S & D) *Overnight - Amadeus Diamond*

Day 5 - LE HAVRE

Morning at Leisure or *Optional Excursion to Honfleur*

Afternoon - **Étretat Tour** (Walk the Normandy Coastline & scenic village)

⊗ (B,L,S & D) *Overnight - Amadeus Diamond*

Day 6 - LE HAVRE - CAUDEBEC-EN-CAUX

Full Day Tour of Historic Normandy with Lunch- WWII D-Day Landing Beaches incl. Omaha Beach, American Cemetery Colleville & WWII Museum

⊗ (B,L,S & D) *Overnight - Amadeus Diamond*

Day 7 - LES ANDELYS - ONBOARD CRUISING ALL DAY

Morning - Cruising or *Optional Excursion to Monet's House & Garden*

Afternoon - Relax & Seine River Cruising

Gala Farewell Dinner Onboard

⊗ (B,L,S & D) *Overnight - Amadeus Diamond*

Day 8 - PARIS

Morning - **Paris City Tour** - Afternoon at Leisure in Paris to explore

Optional Excursion - Montmartre Walking Tour

Final Dinner Onboard in Paris - Ship Docked overnight in Paris

⊗ (B,L,S & D) *Overnight - Amadeus Diamond*

Day 9 - PARIS - FLIGHT HOME

Transfer to the Paris Airport for your flight home

⊗ (B)

B-Breakfast Onboard • S-Snacks Onboard afternoon and/or evening

L-Lunch Onboard • D-Dinner Onboard w/ Hand Selected Wines, Beer & soft drinks

CITIES & PORTS

PARIS

Paris, the "City of Light" is the world's most visited capital. Enjoy a Paris City Tour to see the beloved landmarks that line the Seine including the Notre Dame Cathedral, the Louvre and the Eiffel Tower. Also see the majestic Arc de Triomphe and ride along the Champs-Élysées. During your leisure afternoon maybe wander the historic banks of the Seine which are a UNESCO World Heritage Site.

CONFLANS - AUVERS-SUR-OISE

Visit the village of Auvers-sur-Oise, an inspiration to many of the famous Impressionist masters including Cezanne, Pissarro & Daubigny. The most famous of these artists is Vincent van Gogh. See Auberge Ravoux, where Van Gogh lived. See his final resting place & where he was inspired to create nearly 80 canvases. Experience a multimedia museum journey about the great masters at the Chateau D'Auvers Museum featuring over 500 paintings with sound effects & period music.

ROUEN

Enjoy a Rouen Walking Tour including a visit to the magnificent cathedral that inspired Claude Monet, and the modern Church of Joan of Arc with its wonderful 16th-century stained-glass windows. Rouen is known as Museum Town for its many museums, was important in the Roman era and Middle Ages, and features a cobblestoned pedestrian center with medieval half-timbered houses.

LE HAVRE - ETRETAT

A UNESCO World Heritage Site & important port, Le Havre, sits where the Seine River meets the English Channel. The harbor was destroyed in World War II and was rebuilt. Enjoy a Etretat Tour to explore attractive seaside village and the famous Normandy coastline featuring cliff-top paths for views of steep chalk rocks with impressive needlelike formations, which have inspired many well-known artists. An optional will be available to the beautiful harbor city of Honfleur.

HISTORIC NORMANDY TOUR

Discover Normandy on this full day tour featuring many historic landmarks. Visit Pointe du Hoc, site of a German artillery unit where the US Army climbed 100 foot cliffs. Stop at Omaha Beach, the most famous of the five code named beaches. Visit Colleville Sur Mer, an American Cemetery where over 9,000 American troops are laid to rest. Enjoy lunch before a visit to a World War II Museum to learn more about the landings, battles and liberation of this region.

LES ANDELYS - SEINE CRUISING

This morning stop in the little town of Les Andelys in the shadow of Chateau Gaillard, one time home to Richard the Lionheart. An amazing optional will be available to visit nearby Giverny, home to Impressionist Claude Monet, where you see Monet's House & wander his Garden. The optional makes a photo stop at Chateau Gaillard. After a long day to Normandy, today is the perfect day to relax onboard for a half or full day & enjoy the passing Seine scenery and ship amenities.

Optional 2-Night London Post Cruise Extension

\$975 pp dbl +\$450 single supplement

DAY 9 - PARIS - EUROSTAR TRAIN - LONDON SIGHTSEEING

Board the **Eurostar Train** in Paris for the 2.5 hour rail experience to London. Enjoy a **London City Tour** to see Kensington Palace, the Tower of London, Trafalgar Square, the Houses of Parliament, Big Ben & Buckingham Palace.

⊗ (B-onboard ship) *Overnight - London*

DAY 10 - LONDON - DAY AT LEISURE - PUB DINNER

Explore London at your own pace. Later gather for a traditional Pub Dinner.

⊗ (B & D) *Overnight - London*

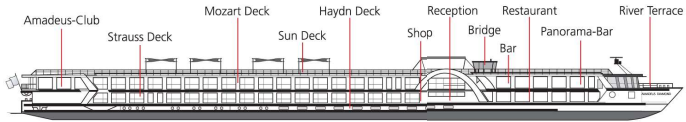
DAY 11 - LONDON - TRANSFER TO AIRPORT - FLIGHT HOME ⊗ (B)

London Optional Extension Includes: 2-Nights Hotel Accommodations - London, Eurostar Train from Paris to London, London City Tour, 3 Meals (2-B & 1-D), Tour Manager & Transfers to London Heathrow Airport.

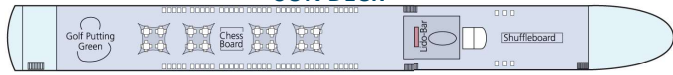
Notes: London Extension must be booked at time of deposit. Passengers must wheel own luggage onto train. Due to group air policies outbound air could be different schedule than the group for London extension passengers. Based on 20 passenger minimum.



MS AMADEUS DIAMOND DECK PLAN



SUN DECK



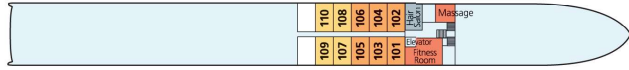
MOZART DECK



STRAUSS DECK



HAYDN DECK



THE SHIP - MS AMADEUS DIAMOND

The 144-passenger *MS Amadeus Diamond* has been a highlight of the fleet since 2009, and is the jewel of the French waterways after its complete renovation in 2019. The refresh upgraded both the interior of the ship and the ship's technology. The Diamond travels exclusively along the Seine and allows guests to experience the charm of northern France in an unforgettable way. The extensive Restaurant and the Panorama Bar offer divine views of the passing riverscapes. The 60-staterooms & 12-suites are bright, modern and provide a wonderful private space to enjoy your river cruise. The attentive English Speaking onboard service staff will see to your comfort with typical European hospitality. The beauty of river cruising is that the most interesting destinations come to you. This Diamond charter features English-only onboard commentary with inclusive sightseeing excursions balanced with choice to simply relax onboard during your leisure time or add sightseeing with optional excursions. The ship offers countless choices for your leisure time including a putting green, fitness studio, massage facilities & quiet spaces to escape with a book.

ALL MEALS INCLUDED ONBOARD

Three meals daily are served graciously in the exquisite restaurant and feature local & international specialties. All dinners are four courses and are served with included Hand Selected Wines, Beer & soft drinks. While dining, you have splendid views of the passing scenic landscapes through the large picture windows. Enjoy afternoon and/or late evening snacks in the lounge based on the daily schedule.

COMFORTABLE & MODERN STATEROOMS

After boarding, unpack once. All staterooms onboard offer excellent river views and are bright, modern and inviting giving you a space of your own with all the amenities and pleasant touches of an upscale hotel. The Mozart & Strauss Decks feature suites and staterooms with French Balconies. Staterooms on the Haydn Deck have a fixed window. Each stateroom is fully equipped with comfortable & modern furnishings including flat screen TV, individual heating/air conditioning controls, safe, phone, hair dryer and a private bathroom with shower.

SHIP TECHNICAL DATA

Refurbished/Built: 2019/2009
Length/Width (ft): 361/36.5

Decks/Crew members: 4/40
Cabins/Suites: 60/12

ACTIVITY LEVEL

Easy **1** **2** **3** **4** Active

Notes - Excursions require moderate walking with some stair climbing possible.
-Hotel/Ship Check in time in Europe typically begins between 3-4 pm.

INCLUSIONS

- Roundtrip Airfare - DFW
- 7 Night Cruise - Outside Cabin
- 20 Meals (7-B, 6-L, 7-D)
- Hand Selected Wines & Beer w/ Dinners
- PWD Tour Director
- Ship Staff
- Wi-Fi Onboard
- Welcome & Farewell Dinners
- Int'l Air Taxes/Fuel/Port Charges
- Baggage Handling at Ship
- Roundtrip Ship Transfers

HIGHLIGHTS & EXCURSIONS

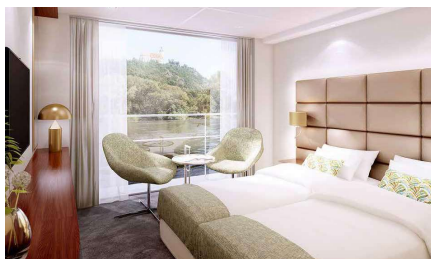
- Paris City Tour
- Full Day Historic Normandy Tour - WWII D-Day Landing Beaches incl. Omaha, Colleville Cemetery and WWII Museum
- Auvers-sur-Oise Tour with Chateau D'Auvers Museum
- Rouen Walking Tour
- Étretat Tour - Normandy Coast & Village
- Paris Extended Port Stay

CRUISE RATES

Cat E - Haydn Deck	\$5795 pp dbl*	\$5595 pp dbl with BD**	+\$1500 single
Cat D - Haydn Deck	\$6095 pp dbl*	\$5895 pp dbl with BD**	+\$1500 single
Cat C - Strauss Deck	\$6595 pp dbl*	\$6395 pp dbl with BD**	+\$1900 single
Cat B - Strauss Deck	\$6795 pp dbl*	\$6595 pp dbl with BD**	+\$1900 single
Cat A - Mozart Deck	\$6995 pp dbl*	\$6795 pp dbl with BD**	+\$2300 single
Suite - Mozart Deck	\$7495 pp dbl*	\$7295 pp dbl with BD**	+\$2700 single

*Regular Rate or **Save \$200 per person/\$400 per couple with Booking Discount Rates (BD)

STATEROOMS & SUITES



STATEROOMS (162 Sq Ft)

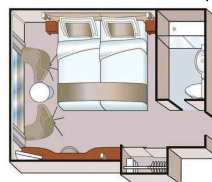
Staterooms feature 2 twin beds that can be separated or put together, flat screen TV, hair dryer, private bath with shower, sliding phone, desk, chair & safe. Floor to ceiling sliding glass doors with French Balcony on Mozart & Strauss Decks.



SUITE - FRENCH BALCONY (237 Sq Ft)

Suites are on the Mozart Deck & feature floor to ceiling sliding glass doors with French Balcony, 2 twin beds that can be separated or put together, flat screen TV, hair dryer, private bath with shower & bathtub, phone, closet, desk, chair, safe, bathrobe & mini-bar. (Suite size and amenities can vary)

STANDARD CABIN (162 sq ft)



SUITE (237 sq ft)

