

Exclusive Charter

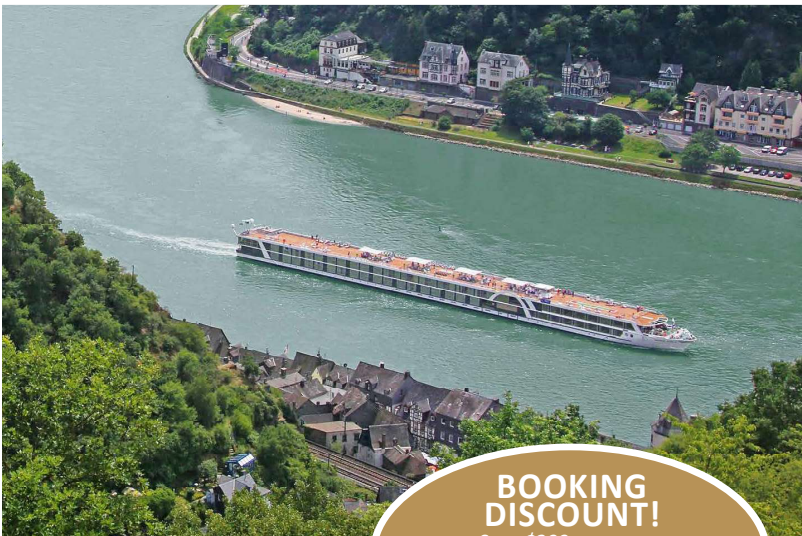


presents

Holland Tulips & Rhine River Castles Cruise

featuring Amsterdam & 7 Nights aboard the Amadeus Cara

10 Days April 1, 2025



BOOKING DISCOUNT!
Save \$200 per person
\$400 per couple*
*See Reservation Info for Booking Discount details



Cochem



Strasbourg

10 Days April 1, 2025

Holland Tulips & Rhine River Castles Cruise

Day 1 - DEPART US - OVERNIGHT FLIGHT TO EUROPE

Day 2 - ARRIVE AMSTERDAM

Arrive Amsterdam Airport & Meet your PWD Tour Manager/Representative(s)
Visit windmills village of **Zaanse Schans** - Check into Amsterdam Hotel for 1 Night Stay
Overnight - Amsterdam Hotel

Day 3 - AMSTERDAM SIGHTSEEING

Morning - Visit **Keukenhof Gardens**
Afternoon - **Amsterdam City Tour & Canal Cruise**

Board the **Amadeus Cara** for 7 Night Cruise - **Welcome Dinner Onboard**
⊗ (B,D) *Overnight - Amadeus Cara*

Day 4 - AMSTERDAM - OPTIONAL - CRUISING

Morning - Ship Departs Amsterdam or *Optional to Volendam & Cheese Tasting*
Afternoon - Cruising towards Cologne, Germany
⊗ (B,L,S,D) *Overnight - Amadeus Cara*

Day 5 - COLOGNE

Morning - Arrive Cologne - **Cologne Walking Tour & Kolsch Beer Tasting**
Afternoon - Leisure time in Cologne - Evening - Ship departs for Cochem
⊗ (B,L,S & D) *Overnight - Amadeus Cara*

Day 6 - MOSELLE CRUISING - COCHEM

Morning - Moselle River Cruising
Afternoon - Arrive Cochem - **Cochem Walking Tour, Castle Visit* & Wine Tasting**
Evening - Ship Departs for Koblenz
⊗ (B,L,S & D) **Reichsburg or Eltz Castle Visit
Overnight - Amadeus Cara*

Day 7 - KOBLENZ - RÜDESHEIM

Morning - Arrive Koblenz - **Koblenz Walking Tour**
Cruise through the **Rhine River Gorge**, a UNESCO Heritage Site
Early Evening - Arrive **Rüdesheim** - Walk into town on own to explore or *Optional
Rüdesheim Vineyard Wine Tasting & Drosselgasse*
⊗ (B,L,S & D) *Overnight - Amadeus Cara*

Day 8 - SPEYER - MANNHEIM

Morning - Arrive Mannheim - Leisure time or *Optional to Heidelberg with Castle*
Afternoon - Arrive Speyer - **Speyer Walking Tour** - Evening - Ship departs for Strasbourg
⊗ (B,L,S & D) *Overnight - Amadeus Cara*

Day 9 - STRASBOURG

Morning - Arrive Kehl/Strasbourg - **Strasbourg City Tour with Canal Boat Cruise**
Afternoon - Ship departs for Basel - Rhine Cruising
Gala Farewell Dinner Onboard
⊗ (B,L,S,D) *Overnight - Amadeus Cara*

Day 10 - BASEL - FLIGHT HOME

Arrive Basel - Transfer to Zurich Airport - Flight Home
⊗ (B) *Overnight - Amadeus Cara*

B-Breakfast Hotel/Onboard • S-Snacks Onboard afternoon and/or evening
L-Lunch Onboard • D-Dinner Onboard with Beer & Hand Selected Wines

CITIES & PORTS

AMSTERDAM & KEUKENHOF GARDENS

Amsterdam started as a small fishing village in the late 12th century & today is one of the world's most important ports. The city has one of the largest historic centers in Europe with about 7,500 registered historic buildings & 90 islands linked by 400 bridges. Enjoy an **Amsterdam City Tour & Canal Cruise** featuring views of beautiful homes through the intricate canal system. Outside of Amsterdam, visit the famous **Keukenhof Gardens**, the Garden of Europe and the world's 2nd largest flower garden with 7 million bulbs planted annually. This showplace for the tulip growers of the Netherlands features numerous sculptures between the flower beds to create harmony between art and nature. Visit the famous village of **Zaanse Schans** featuring windmills, wooden shoes & historic buildings.

COLOGNE

Cologne is Germany's 4th largest city and located on both sides of the Rhine. Enjoy a **Cologne Walking Tour** of the Old Town (Altstadt) and see the massive iconic 13th century Gothic cathedral. Explore the dock side taverns, cafes and shops.

COCHEM

Cochem is a charming town on the Moselle River, surrounded by vineyards. Enjoy a **Cochem Walking Tour** featuring the picturesque old town with half-timbered houses, a historic market square, and a baroque town hall. Enjoy a **Wine Tasting** at a local winery including the region's famous Riesling. Then visit either the Reichsburg or the Eltz Castle, both majestic castles offer stunning views.

KOBLENZ - RHINE RIVER GORGE - RÜDESHEIM

Arrive in **Koblenz** and enjoy a **Koblenz Walking Tour** of this charming Rhineland town situated at the confluence of the Rhine & Moselle Rivers. Today your ship cruises through the **Rhine River Gorge**, a UNESCO Heritage Site and the most stunningly beautiful stretch of the river with hillsides dotted with fairy-tale castles, historic towns and vineyards. Enjoy a stroll through **Rüdesheim** and explore the Drosselgasse, a narrow alley lined with wine taverns and restaurants on your own or maybe take an optional Rüdesheim Wine Tasting Tour.

SPEYER

Speyer is one of Germany's oldest cities, known for its cathedral, numerous churches and the 13th-century Altpörtel ("Old Gate"). Explore the city during your **Speyer Walking Tour**. Today maybe take an optional excursion to historic Heidelberg to visit the red-walled castle with beautiful views of the Neckar Valley.

STRASBOURG, FRANCE

Capital city of the Alsace region in northeastern France, Strasbourg is situated on the Rhine at the German border. Enjoy a **Strasbourg City Tour with Canal Boat Cruise**. Start with a short coach trip through the city, then walk through the lovely, historic old town and see the famous cathedral. During a boat cruise discover the famous quarter, "Petite France". This former mill and tanner district still maintains its medieval charm. See some of Strasbourg's famous half-timbered houses, and the Council of Europe.

*Optional 2 Night Lucerne, Switzerland Post-Cruise Extension
\$725 pp dbl +\$350 single supplement*

Day 10 Disembark Ship in Basel - Lucerne

Morning - **Basel City Tour**
Afternoon - Transfer to Lucerne - Check-in for a 2-night stay in this scenic city situated on Lake Lucerne
(B-onboard ship)
Overnight - Lucerne

Day 11 Lucerne Sightseeing

Morning - **Lucerne Walking Tour** with Chapel Bridge & Old Town
Afternoon - Time at leisure in Lucerne
(B) *Overnight - Lucerne*

Day 12 Lucerne - Zurich Airport

Transfer to the Zurich Airport & Fly Home (B)

Lucerne Optional Extension Includes: 2 Nights Hotel in Lucerne, Basel City Tour, Lucerne Walking Tour, Tour Manager, 2-Breakfasts, Transfers to Lucerne and to Zurich for Flight Home

Notes: Lucerne Extension must be booked at time of deposit. Due to group air policies outbound air could be a different schedule than the rest of your group for Lucerne extension passengers • Lucerne extension is based on 20 passenger minimum



Amadeus Cara

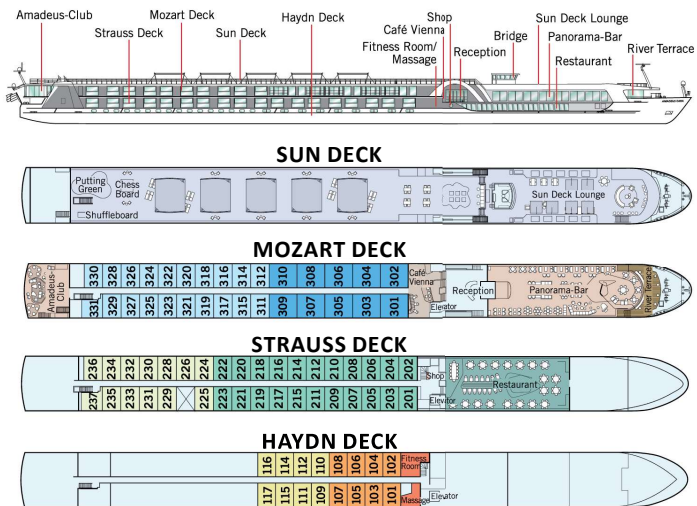


Fine Dining



Fitness Center

AMADEUS CARA DECK PLAN



THE SHIP - MS AMADEUS CARA

The innovative and custom designed 162 passenger Amadeus Cara, launched in 2022, offers all the amenities of a floating 5-star hotel. This Premium cruise ship features the most modern furnishings that blend masterfully with the architecture of the ship and a luxurious design that is the hallmark of the Amadeus fleet. The extensive Restaurant and the Panorama Bar offer divine views of the passing riverscapes, and the glass-shielded River Terrace & the Sun Deck allow you to enjoy the open air. The attentive English-speaking onboard service staff will see to your comfort with typical European hospitality. The cabin design plans are forward-thinking, bright & modern, all part of a premium focus with 71 large Staterooms & 10 Suites. The beauty of river cruising is that the most interesting destinations come to you. This Cara charter features English-only onboard commentary with inclusive shore excursions balanced with choice to simply relax onboard, get a spa treatment or add sightseeing with optional excursions.

ALL MEALS INCLUDED ONBOARD

Three meals daily are served graciously in the exquisite restaurant and feature local & international specialties. All dinners are four courses and are served with included Hand Selected Wines, Beer & Soft drinks. While dining, you have splendid views of the passing scenic landscapes through the large picture windows. Enjoy afternoon and/or late evening snacks in the lounge based on the daily schedule.

COMFORTABLE & INNOVATIVE STATEROOMS

After boarding, unpack once. All staterooms are larger than traditional river cruise cabins & offer excellent river views. The Mozart Deck features 10 Suites with Walk Out Balconies. The other 20 Staterooms on the Mozart Deck & 35 Staterooms on the Strauss Deck feature a Drop-Down Panoramic Window. The 16 Staterooms on the Haydn Deck have a fixed window. All staterooms are fully equipped with comfortable & modern furnishings including flat screen TV & large private bathrooms with shower.

SHIP TECHNICAL DATA

Launched: 2022 Staterooms/Suites: 71/10
Decks/Crew: 4/46 Max passengers: 162

ACTIVITY LEVEL

Easy **1** **2** **3** **4** Active

Notes - Excursions require moderate walking with some stair climbing possible.
-Hotel/Ship Check in time in Europe typically begins between 3-4 pm.

INCLUSIONS

- Roundtrip Airfare - DFW
- 1 Night Amsterdam Hotel
- 7 Night Cruise - Outside Cabin
- 21 Meals (8-B, 6-L & 7-D)
- PWD Tour Manager
- Hand Selected Wine & Beer with Dinners
- Wi-Fi Onboard
- Welcome & Farewell Dinners Onboard
- Ship Staff
- Baggage Handling
- Int'l Air Taxes/Fuel/Fees & Port Charges
- Hotel & Ship Transfers

EXCURSIONS/TOURS

- Amsterdam City Tour & Canal Cruise
- Keukenhof Flower Gardens
- Zaanse Schans Windmills Visit
- Cologne Walking Tour & Beer Tasting
- Cochem Walking Tour, Wine Tasting & Castle Visit
- Koblenz Walking Tour
- Rhine River Gorge
- Speyer Walking Tour
- Strasbourg City Tour

RATES

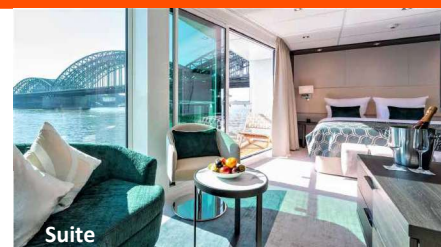
Cat E - Haydn Deck	\$5795 pp dbl*	\$5595 pp dbl with BD**	+\$1500 single
Cat D - Haydn Deck	\$6095 pp dbl*	\$5895 pp dbl with BD**	+\$1500 single
Cat C - Strauss Deck	\$6595 pp dbl*	\$6395 pp dbl with BD**	+\$1900 single
Cat B - Strauss Deck	\$6795 pp dbl*	\$6595 pp dbl with BD**	+\$1900 single
Cat A - Mozart Deck	\$6995 pp dbl*	\$6795 pp dbl with BD**	+\$2300 single
Suite - Mozart Deck	\$7495 pp dbl*	\$7295 pp dbl with BD**	+\$2800 single

*Regular Rate or **Save \$200 per person/\$400 per couple with Booking Discount Rates (BD)

STATEROOMS & SUITES



Mozart/Strauss Stateroom



Suite

STATEROOMS - 172 or 188 SQ FT

All staterooms feature 2 twin beds that can be separated or put together, flat screen TV, shower, hair dryer, closet, phone, desk, chair & safe. Mozart & Strauss Staterooms feature panoramic Drop-Down Windows with 188 sq. ft. of floor space. Haydn Deck Staterooms feature a Fixed Window with 172 square feet of floor space.
(stateroom size & amenities can vary)

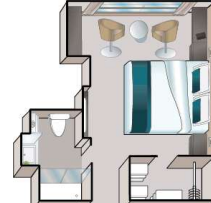
SUITE - 284 SQ FT WITH BALCONY

All suites are on the Mozart Deck and have panoramic windows with exterior Walk Out Balcony, two twin beds that can be separated or put together, a private sitting area, flat screen TV, mini-bar, private bath with shower, hair dryer, phone, closet, desk, chair, safe & offer 284 square feet of floor space.
(Suite size and amenities can vary)

Stateroom Haydn Deck (172 sf)



Stateroom Strauss & Mozart Decks (188 sf)



Suite Mozart Deck (284 sf)

